



LWV/LACounty

An Interleague Organization

VOTER

LEAGUE OF WOMEN VOTERS® OF LOS ANGELES COUNTY

An Interleague Organization — Antelope Valley • Beach Cities • Claremont Area • East San Gabriel Valley • Glendale-Burbank • Long Beach Area • Los Angeles • Palos Verdes Peninsula-San Pedro • Pasadena Area • Santa Monica • Torrance Area • Whittier

www.lacilo.ca.lwvnet.org

LWVLACounty@msn.com

April / May 2014

Calendar 2014

May 28th	May Board Meeting	at Board Retreat
May 28th	Board Retreat	Mary & Joseph Retreat Center, Palos Verdes
No June Board Meeting		
July 2	Board Meeting	LWVLA Office
July 19**	Summer League Day - Popovers	The Women's City Club, Pasadena
**Note change from regular date		
August Board Meeting	To be discussed at retreat	
Sept 3	September Board Meeting	Location TBA
Sept 27	Fall League Day - Ballot Measures	

Inside this issue...

President's Message	— — — — —	Page 2
Mental Health, Children's Issues and Prison Transfers	— — — — —	Page 3
Smart Voter and Maplight Pilot Project	— — — — —	Page 4
LWV LACounty Convention Write-Up	— — — — —	Page 5
Natural Resources	— — — — —	Page 6
Follow the Money, New Funding for K-12 Public Schools Article	— — — — —	Page 7
Follow the Money Flyer	— — — — —	Page 8

From Our President’s Desk...

The County League’s annual convention was held on March 29, 2014. Ten Local Leagues in Los Angeles County were represented among the 52 attendees. We elected County League Board officers and directors and passed a budget for 2014-15.

The Convention was pleased to have County Aiha Nguyen, of the Los Angeles Alliance for a New Economy (LAANE) as our speaker. She commented on some of the challenges of income inequality in Los Angeles County and described the work she has been doing through LAANE to mitigate the impact on at risk populations. (See article in this Voter on Aiha’s remarks.)

At the Convention, the delegates voted to support an update of our County position on elections to address Vote by Mail. A study committee has been formed with Margo Reeg as chair. Please contact Margo if you want to participate on the study committee or provide the committee with information or comments.

We are now moving into the beginning of the election cycle for 2014. Local Leagues will be holding candidate forums. The Los Angeles City League, with the cooperation of the County League, has partnered with other organizations to organize forums for candidate for Sheriff, a County office.

Don’t forget to encourage your candidates to post their information on Smart Voter. Also publicize Smart Voter to your members and communities as a key resource for election information.

Both State and National Leagues have been sending out Action Alerts, and more will come as we move forward. It’s important for all of us to respond to these requests and send messages to our legislators on the issues that we are fighting to uphold. This is one of the strengths of our grass-roots tradition and one reason for LWV continuing to have an impact on proposed legislation. Signing up to receive alerts is easy to do on the LWVC and LWVUS websites.

Nancy

Nancy Mahr
nlmahr@verizon.net
310-377-0735

League of Women Voters of Los Angeles County Board of Directors, 2014 -2016

President

Nancy Mahr

First Vice President

Lola Ungar

Second Vice President

Margo Reeg

Secretary

Betsy Coffman

Treasurer

Dorothy Stewart

Directors

Raquel Beltran

Linda Herman

Vi Iungerich

Fatima Malik

Phyllis O’Connor

Linda Paquette

Sally Seven

Jack Sullivan

Sandra Trutt

Pat Kromka (Chair, Nominating Committee)

Mental Health, Children's Issues and Prison Transfers

by Vi Iungerich, Mental Health Portfolio

Mental Health

Didi Hirsch, a large mental health agency situated in Culver City, opened a new program in late November for 60 homeless women with mental health issues and children. This program provides housing in their Via Avanta building for these women for six months, followed by more permanent housing after this initial housing period. Based on the homeless project "Project 50" which supplied housing to 50 chronically homeless and vulnerable people and championed by County Supervisor Zev Yaroslavsky, this project showed that giving these homeless housing and then services saved the county money and stabilized a difficult population.

Didi Hirsch raised more than 1.2 million dollars to refurbish the housing from a variety of grants and loans. In addition, Yaroslavsky allocated an additional \$542,000 for capital improvements. Homelessness has increased about 18% in the last year and it is currently estimated at about 54,000 people in Los Angeles County. Providing housing has been shown to help the mentally ill focus on their treatment rather than becoming increasingly anxious over the need to find shelter. Cost savings are also shown in fewer emergency visits to hospitals and other costs such as jail detentions etc.

Children Issues:

The budget Act of 2009 appropriated over 2.9 billion through the California Department of Education for Child Development Programs in a mix of 74 percent state funds and 26 percent federal funds. Over 1,460 contracts support and provide services to almost 500,000 children. The new budget will not come out until May of this year and not start until the summer, however, it looks like there will be an increase in funding.

Taking a look at the current mix of programs they include the following:

General Child Care and Development:

Care for children birth to 12 years and older children with exceptional needs.

Private and public day care, healthy meals and snacks, parent education, and referrals to health and social services.

Migrant Worker Child Care and Development:

Day care and developmental programs that follow migrant children as the families move in agricultural work.

California State Preschool Program:

Consolidates funding for Preschool, Pre-kindergarten and General Child Care programs to serve eligible three and four year old children in both part day and full day developmentally appropriate core class curriculum.

Severely Handicapped Program:

Serves children and young adults ages birth to 21 in developmental and therapeutic activities and family counseling.

Alternative Payment Program:

Offers eligible families choice in day-care programs using both state and federal funds. Payments are made directly to day care operators.

CalWORKs Child Care

A collection of programs to provide child care for families in CalWORK programs.

Resource and Referral:

Helps families find resources, helps potential providers with licensing help and coordinates community resources.

Quality Improvement Plan Activities:

Provides information for federal mandates and state plans to serve children and, in particular, low income families.

Continued on next page

Continued from page 3

Local Child Care and Development Planning Councils:

These councils are mandated to conduct assessments of county child care needs and prepare plans to address needs. These assessments must contain information on the supply and demand for both subsidized and non subsidized care.

Prison Transfers:

The LA Times reported that LA County probation officers lost track of 80 felons they were supposed to monitor in 2013 who were wearing electronic monitoring devices. Some were lost for days or weeks.

The glitch appears to be due to problems with the sensitivity of the devices which are tracked by a GPS program. Apparently there were so many false alarms (up to 20,000 a month) that the probation officers began to discount alerts.

An internal audit of the devices, which are supplied by a private vender, found that one in four were defective. In addition, the increase in monitoring caused by the transfer of prisoners from the state added to all the confusion.

While steps are now being taken to remove alerts from inmates moving quickly through zones (due to being in a car or bus), there is still another problem in that GPS signals cannot pierce concrete buildings where inmates are working or sleeping.

Currently the monitored population of felons is now about 331. In addition they also monitor about 100 pretrial detainees and more than 550 juveniles sentenced to home detention or curfew.



SAVE THE DATE! County Summer League Day "Popovers in Pasadena"

Saturday, July 19, 2014

The Women's City Club
Pasadena

Smart Voter[®]

Smart Voter and MapLight Launch Pilot Partnership



As part of the work we have been doing to deliver the Next Generation of Smart Voter, we are pleased to announce that LWVCEF is partnering with MapLight to enhance the voter outreach we currently achieve through Smart Voter. [MapLight](#) is a nonpartisan research organization whose goal is to reveal money's influence in politics. Most of you are familiar with [Maplight's Voter's Edge Web site](#) which many League speakers access to obtain ballot measure campaign funding information. The League's new collaboration with MapLight is an exciting opportunity to serve more Californians and enhance the quality of nonpartisan information and resources available to voters. Although still a work in progress, our team is working hard to have an initial pilot in place for the upcoming June election. A webinar briefing on the project was offered to Smart Voter County and Local Coordinators in early April and recorded for those not able to attend. In the coming weeks, additional information about the June pilot will be shared through our volunteer leaders and via LWVCEF communications channels. Stay tuned!

LWV LA County Convention Hosts Speaker on “Economic Inequality”

By Pat Colby, LWVPVP

On March 29, 2014, the Los Angeles County League of Women Voters held its 52nd Annual Convention at the Rio Hondo Event Center, ably led by President Nancy Mahr. Following various convention adoptions, appointments and motions, Nancy Mahr introduced the guest speaker, Aiha Nguyen from the Los Angeles Alliance for a New Economy (LAANE) who spoke of LAANE’s work to rectify “Inequality in Los Angeles County.”

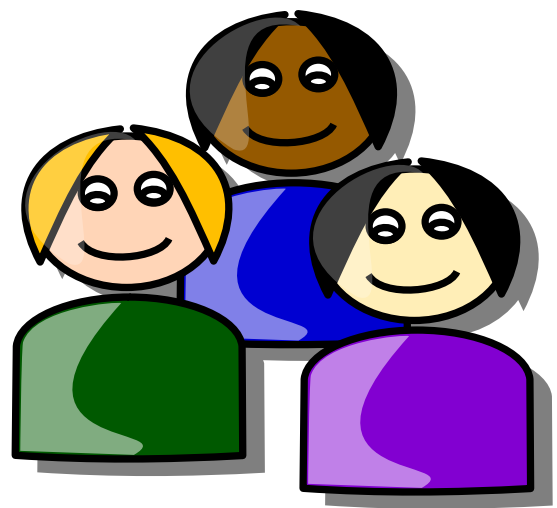
The alliance, which focuses heavily on bringing higher wages and greater benefits to low-income workers, has served as a driving force behind a number of successes in Long Beach and Los Angeles.

Founded in 1993, by attorney Madeline Janis, LAANE is the think tank, policy arm, and, on occasion, political organizer for the Los Angeles labor movement. LAANE first came to prominence when it spearheaded a living-wage ordinance for employees of companies with city contracts. The legislation became the model for ordinances in more than 100 other cities.

Soon after, LAANE set the template for community benefit agreements. LAANE has won benefits—including local-hiring, living-wage and union-representation agreements—at many of L.A.’s mega-developments, most prominently Staples Center. It has crafted an inner-city hiring accord with the county’s transit agency, which will produce thousands of jobs in the African American community. It has persuaded voters in Long Beach (by a margin of 64% to 36%) to give 2,000 employees at the city’s largest hotels a raise to \$13 an hour and five paid sick days. It has brought together the Teamsters, the Sierra Club and the Natural Resources Defense Council and hammered out agreements that reduced the truck pollution around the Los Angeles and Long Beach harbors by nearly 90%.

And on Tuesday, April 1, 2014, it was the driving force behind a Los Angeles City Council vote in favor of a new ordinance to overhaul the way garbage is collected in Los Angeles. The City of Los Angeles is responsible for collecting trash from single-family homes. But private haulers handle garbage collection at apartment buildings and businesses. Under the previous system, haulers were able to negotiate directly with landlords. The new system will divide the city into 11 areas served by haulers elected by the city through a competitive bidding process. This will allow the city to mandate higher environmental standards for trucks and greater efforts to recycle.

LAANE has looked at the growth of economic inequality and the decline of middle-income jobs in Los Angeles County and through research, coalition-building and organization has formulated an approach to raise the incomes of American workers. As LAANE founder Madeline Janis stated: “When our government invests our dollars in the private economy, we should get a return on that investment. We should get a return in the form of living wages and in the form of clean air and parks and local hiring. Getting a return on your investment is a core capitalist concept.”



NATURAL RESOURCES

By Jack Sullivan, LWV/LAC

Here is a brief summary of natural resources issues relevant to L. A. County. There will be more to follow as these issues develop.

1. **The Drought:** Water continues to be an issue as the drought continues. The recent storms helped but did not end the drought. A snow survey Tuesday (4/1/14) found the Sierra Nevada snow pack holding 32 percent of normal water content. Efforts at water conservation will continue to be necessary.
2. **The Tunnels:** The debate over the twin tunnels intended to divert water around the Delta in the north continues. The tunnels will take 10 years to construct (once all the law suits are finished) so will have no effect on the current drought.
3. **Endangered Species Act:** State officials have temporarily waived endangered species protection for fish in the Delta given the recent storms. More water will be sent south than originally planned but most of it will go to agriculture in the San Joaquin Valley.
4. **LA County Sewer Rates:** LA County Sanitation Districts want to raise sewage rates to cope with increasing operating costs. The tax on each parcel will go up over the next three years from \$148/yr to \$163/yr for each sewerage unit. Each parcel should have received a mailing from LACSD. For more information on sewerage rates and other sewer issues go to: <http://lacs.org/>.
5. **Water Bonds:** There is a water bond scheduled for the November ballot. It was originally proposed for 2009 and was for \$11 million but was postponed for fear of defeat by a concerned electorate. It will appear on the November 2014 ballot unless the legislature passes an alternative. There has been continuing and wide-spread concern about the 2009 bond proposal as many deemed it filled with pork that had little relation to solving California's water

problems. There are a number of proposals before the legislature (at least 7) that would lead to a trimmed down water bond in the area of \$6 to \$7 million. There will be much discussion of these possible water bonds in the coming months.

6. **For More Information:** For more information on water bonds, the drought, and many other water issues, go to: <http://mavensnotebook.com/>. The Water Maven does an excellent job of covering a wide range of water issues for Californians.



Follow the Money, New Funding for K-12 Public Schools

A Public Forum Presented by LWV Beach Cities and Torrance Area

Tuesday April 29, 2014, 7:00 – 8:30 p.m.

Don and Sari Brann Center at the Peter Burnett School

5403 W. 138th Street, Hawthorne

For the first time in 40 years, California is changing its funding formula for K-12 public schools. After many years of research, policy development and community input, Governor Brown signed the Local Control Funding Formula (LCFF) into law on July 1, 2013.

With the implementation of LCFF, each school district must work with parents and other community stakeholders to develop a Local Control Accountability Plan (LCAP). This plan, which must be adopted by July 2014, will outline intended outcomes and guide each District on the expenditure of the new monies available to them.

The League of Women Voters of the Beach Cities and the Torrance Area League of Women Voters are co-sponsoring a public forum to provide information on the upcoming funding changes. Local PTAs and Public Libraries are also co-sponsoring this event.

FOLLOW THE MONEY, New Funding for K-12 Public Schools, will provide background information and include a panel of superintendents & administrators from local school districts to outline what LCFF means to the children and families in our communities.

Diane Wallace, Professor, National University, and a member of LWVBC will provide an overview of the Local Control Funding Formula and the Local Control Accountability Plan.

The panelists will be:

Patricia W. Escalante, Superintendent, Hermosa Beach City School District

Erik Elward, Director, Educational Services, Redondo Beach Unified School District

Tom Johnstone, Superintendent, Wiseburn School District

Don Brann, State Trustee, Inglewood School District, LWVBC member

We hope to see you there. Please Share this information with others who may be interested.

- Penny Markey, Education Committee, LWVBC



FOLLOW THE MONEY!



NEW K-12 SCHOOL LOCAL CONTROL FUNDING FORMULA & LOCAL CONTROL ACCOUNTABILITY PLAN

**Tuesday, April 29, 2014
7:00 – 8:30 PM**

**DON and SARI BRANN CENTER
Peter Burnett School
5403 W. 138th St. Hawthorne**

*A Presentation and Discussion for Parents, Teachers and Community Members
Centinela Valley • El Segundo • Hawthorne • Hermosa Beach • Inglewood • Lawndale
Lennox • Manhattan Beach • Redondo Beach • Torrance • Wiseburn*

Presentation and Overview

Diane Wallace, Professor, National University and LWV

Panel

Don Brann, State Trustee, Inglewood Unified School District
Erik Elward, Director, Educ. Services, Redondo Beach Unified School District
Patricia W. Escalante, Superintendent, Hermosa Beach City School District
Tom Johnstone, Superintendent, Wiseburn School District



Sponsored by the Beach Cities and Torrance Leagues of Women Voters,
the Inglewood, Manhattan Beach, and Redondo Beach
Councils of PTAs, and the County of Los Angeles Public Library

www.beachvoter.org

harriet@beachvoter.org

The League of Women Voters of Los Angeles County in both its values and practices affirms its belief and commitment to diversity, pluralism and affirmative action.

SUBSCRIBE to the VOTER

Send your email address to the Voter editor to be notified of the latest VOTER posted on our website at: www.lacilo.ca.lwvnet.org and to be included on the email distribution list.

Send to: mebarnes@aol.com

Join Us

The League of Women Voters welcomes new members, both men and women, who are citizens of voting age. Associate membership is open to all others. **Find a local League below :**

Beach Cities - beachcities.ca.lwvnet.org

Claremont Area- claremont.ca.lwvnet.org

East San Gabriel Valley- esgv.ca.lwvnet.org

Glendale-Burbank - gb.ca.lwvnet.org

Long Beach Area - lba.ca.lwvnet.org

Los Angeles - lwvlosangeles.org

Palos Verdes Peninsula - lwvpalosverdes.org

Pasadena Area - lwv-pa.org

Santa Monica - lwvsantamonica.org

Torrance Area - lwvtorrancearea.org

Whittier - whittier.ca.lwvnet.org

Internet Election Resources Smart

Voter www.smartvoter.org

Statewide propositions plus local candidates & issues on your ballot, with extensive Background materials and media links from LWV California Ed Fund

LA County Registrar-Recorder www.lavote.net

Election calendar, polling place look-up, absentee voting info, multilingual voting materials, Locations for Touchscreen early voting

Easy Voter Guide www.easyvoter.org

Concise facts on statewide propositions; Chinese, Korean, Spanish, Vietnamese, and English

Secretary of State www.ss.ca.gov

Official text of ballot measures

CA Legislative Analyst www.lao.ca.gov Analysis of all ballot measures

CA Voter Foundation www.calvoter.org

Data on campaign contributions to candidates and measures

CA Budget Project www.cbp.org

Analyzes the fiscal effects of statewide ballot measures

This **VOTER** is ready for viewing

On our website: www.lacilo.ca.lwvnet.org



Nancy Mahr, LWV/LA County President
28028 Ella Road
Rancho Palos Verdes, CA 90275